

ELAD FDM-DUO

Dual Mode SDR Transceiver



FIRMWARE UPDATE

Contents

| | |
|---|----|
| Revision History | 2 |
| Introduction | 2 |
| 1 RX and TX firmware update | 3 |
| 1.1 RX firmware update | 4 |
| 1.2 TX firmware update | 5 |
| 2 USB interface firmware update | 6 |
| 3 FPGA firmware update..... | 6 |
| 4 User interface (UI) firmware update..... | 7 |
| 4.1 Update mode activation | 7 |
| 4.2 USB port identification..... | 7 |
| 4.3 Update with Flash Magic Classic Version 11..... | 8 |
| 4.4 Update with Flash Magic Version 12 | 10 |

Revision History

| Revision | Date | Description |
|----------|---------|--|
| Rev 1.0 | 11/2017 | <ul style="list-style-type: none"> • Document creation. • Added note about how to activate manually the UI update mode. |
| Rev 1.1 | 07/2019 | <ul style="list-style-type: none"> • Added links to firmware. • Added picture on section 2 - USB interface firmware update. • Modified section 3 - FPGA firmware update. • Updated section 4 - User interface (UI) firmware update to support both versions 11 and 12 of Flash Magic. |

Introduction

This document describes how to update the various firmware of the FDM-DUO. The latest firmware versions are available here: <http://sdr.eladit.com/FDM-DUO/Firmware%20Releases/>.

TO FACILITATE THE PROCEDURE, PLEASE UPDATE THE USER INTERFACE (UI) FIRMWARE AFTER DOING THE OTHERS FIRMWARE UPDATES.

1 RX and TX firmware update

To update the RX and TX firmware, you must remove the FDM-DUO top cover. Remove the four screws in the FDM-DUO chassis bottom as shown in the figure below.



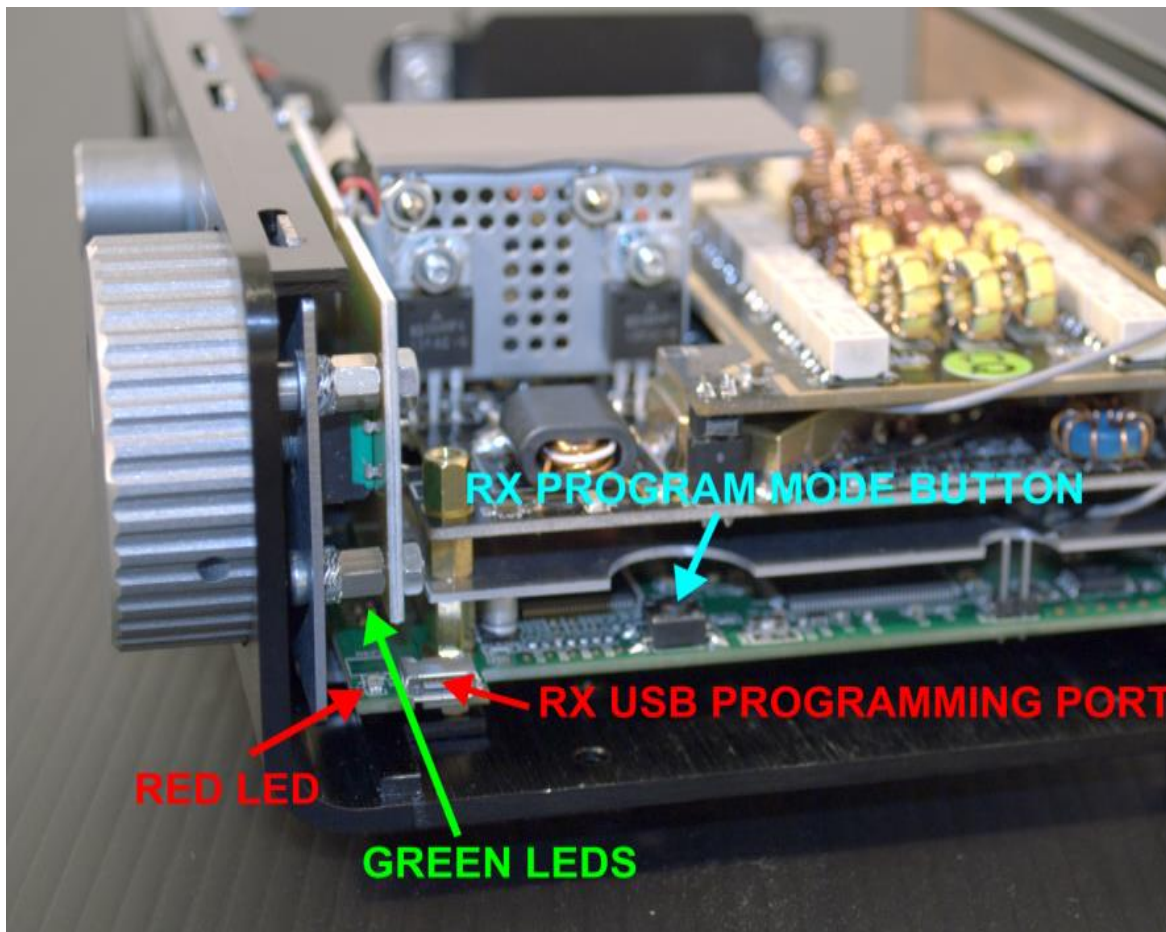
Then remove the top cover of the FDM-DUO

1.1 RX firmware update

First of all, download the latest version of the RX firmware from here : <http://sdr.eladit.com/FDM-DUO/Firmware%20Releases/ARM%20Rx%20Firmware/index.php?lang=EN>. Unzip the archive and copy the file “*fdmduorx.bin*” in the USB flash drive provided with the FDM-DUO. If the file already exists, replace it.

The file “*fdmduorx.bin*” must be in the root of the USB flash drive. For example : “*E:\fdmduorx.bin*”.

Connect the provided USB flash drive to the FDM-DUO “**RX USB PROGRAMMING PORT**” using the provided micro-USB adapter. See the picture below. Connect the power supply, keep pressed the “**RX PROGRAM MODE BUTTON**” and power up the FDM-DUO.



- Keep pressed the “**RX PROGRAM MODE BUTTON**” until the “**RED LED**” turns on.
- Release the “**RX PROGRAM MODE BUTTON**”.
- Wait until the “**RED LED**” turns off.
- Turn off the FDM-DUO, disconnect the USB flash drive and power up the FDM-DUO.

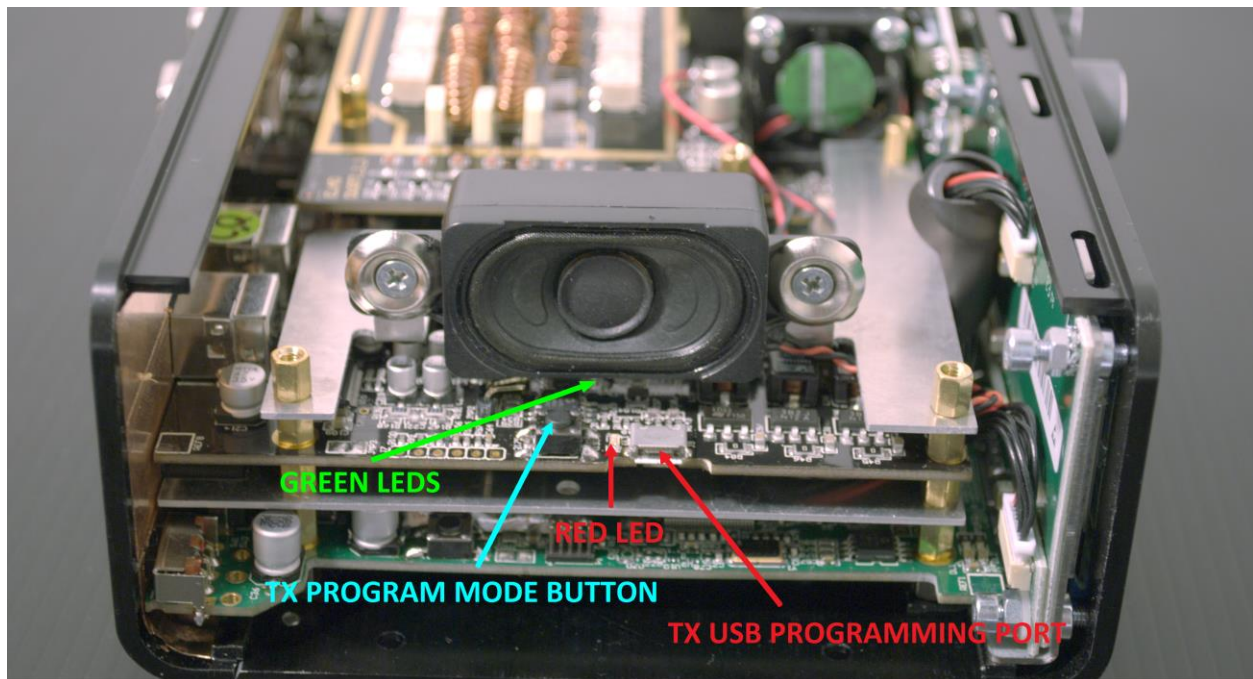
If during the firmware update the “**GREEN LEDS**” are blinking together quickly, it means that the update process ended not successfully. In this case contact the ELAD technical assistance.

1.2 TX firmware update

First of all, download the latest version of the TX firmware from here : <http://sdr.eladit.com/FDM-DUO/Firmware%20Releases/ARM%20Tx%20Firmware/index.php?lang=EN>. Unzip the archive and copy the file “*fdmduotx.bin*” in the USB flash drive provided with the FDM-DUO. If the file already exists, replace it.

The file “*fdmduotx.bin*” must be in the root of the USB flash drive. For example : “E:\fdmduotx.bin”.

Connect the provided USB flash drive to the FDM-DUO “**TX USB PROGRAMMING PORT**” using the provided micro-USB adapter. See the picture below. Connect the power supply, keep pressed the “**TX PROGRAM MODE BUTTON**” and power up the FDM-DUO.



- Keep pressed the “**TX PROGRAM MODE BUTTON**” until the “**RED LED**” turns on.
- Release the “**TX PROGRAM MODE BUTTON**”.
- Wait until the “**RED LED**” turns off.
- Turn off the FDM-DUO, disconnect the USB flash drive and power up the FDM-DUO.

If during the firmware update the “GREEN LEDS**” are blinking together quickly, it means that the update process ended not successfully. In this case contact the ELAD technical assistance.**

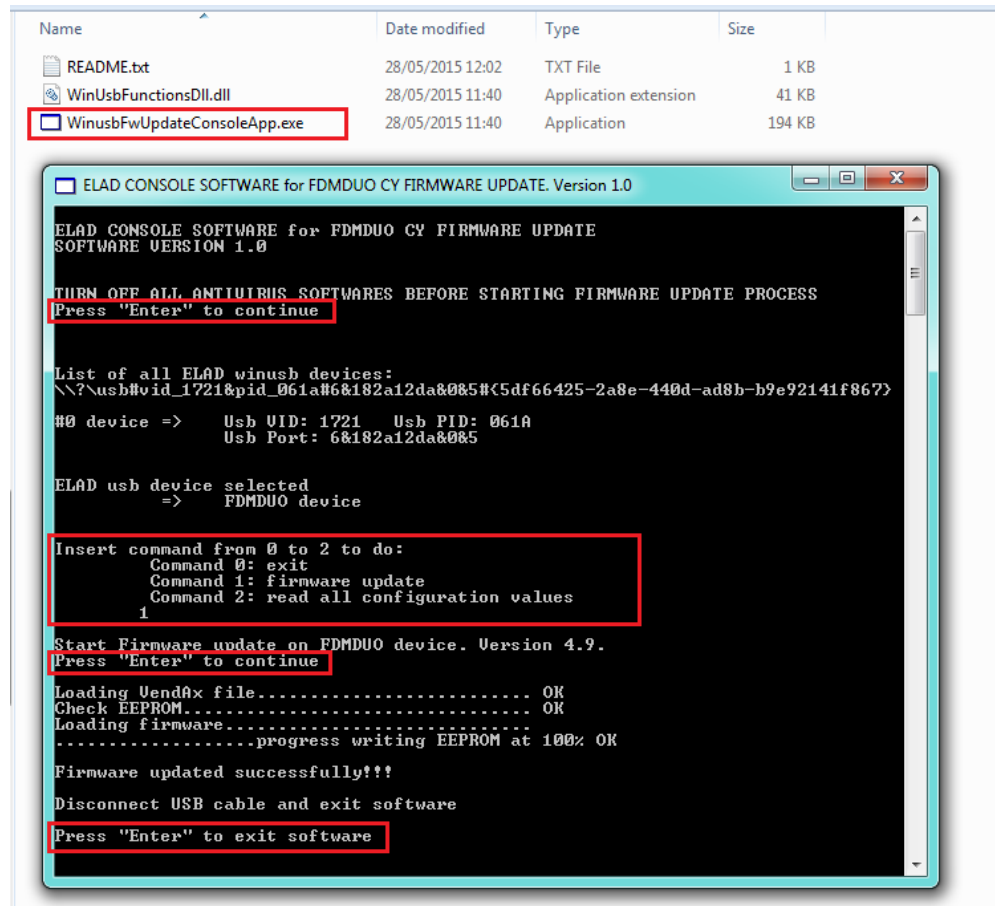
2 USB interface firmware update

Download the latest version of the USB interface firmware here :

<http://sdr.eladit.com/FDM-DUO/Firmware Releases/USB Interface Firmware/index.php?lang=EN>.

Before starting the firmware update, disable all anti-virus programs to avoid any inconvenience.

Turn on the FDM-DUO and connect the USB RX connector to a USB 2.0 port of your computer. Unzip the archive, launch the executable file inside and follow the instructions to update the firmware.



Do not disconnect the USB cable and do not turn off the FDM-DUO.

Once the update is completed, turn off and on the FDM-DUO.

3 FPGA firmware update

There is no update to do for the FPGA firmware.

4 User interface (UI) firmware update

Download the latest version of the user interface firmware from here : <http://sdr.eladit.com/FDM-DUO/Firmware%20Releases/UI%20User%20Interface%20Firmware/index.php?lang=EN>.

Before starting the firmware update, it is recommended to disable all antivirus programs in order to avoid any inconvenience.

In order to update the user interface (UI) firmware, you need to install the Flash Magic software. This program is available here: <http://www.flashmagictool.com/>. There are two versions available, **Classic Version 11** and **Version 12**, this document covers the use of both.

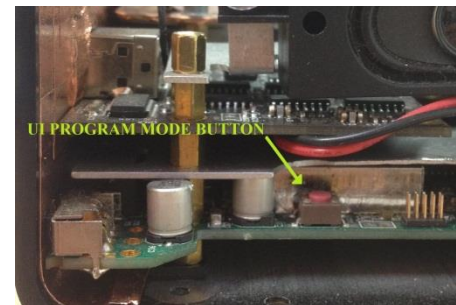
4.1 Update mode activation

Turn on the FDM-DUO and connect the CAT USB port to a USB 2.0 port of your computer. Follow the steps below to enable the user interface update mode :

- Press the **MENU F5** key, turn the E2 knob to go to the menu 80 (SERVICE), press E2 to enter in the menu,
- turn E2 to display “ON” and press E2 to confirm,
- turn E2 to go to the menu 82 (UI Update), press E2 to enter in the menu,
- turn E2 to display “YES” and press E2 to confirm.

Important note : it is also possible to enable manually the user interface update mode. To do this :

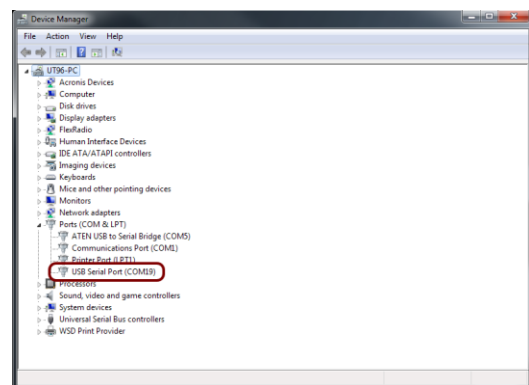
- turn off the FDM-DUO,
- keep pressed the **UI PROGRAM MODE BUTTON**,
- turn on the FDM-DUO,
- release the **UI PROGRAM MODE BUTTON**,
- the UI is now in update mode, notice that the display remains turned off.



4.2 USB port identification

To identify the CAT USB port number you need to open the windows “Device Manager” and expand the “Ports (COM & LPT)” node. The CAT USB port is listed as “USB Serial Port”.

In the picture alongside the CAT USB port number is COM19.



4.3 Update with Flash Magic Classic Version 11

Run Flash Magic 11 and set the following parameters.

In the “Step 1 – Communication” section :

- select LPC1766,
- COM Port: the CAT USB COM port,
- Baud Rate: 230400,
- Interface: None (ISP).

In the “Step 2 – Erase” section :

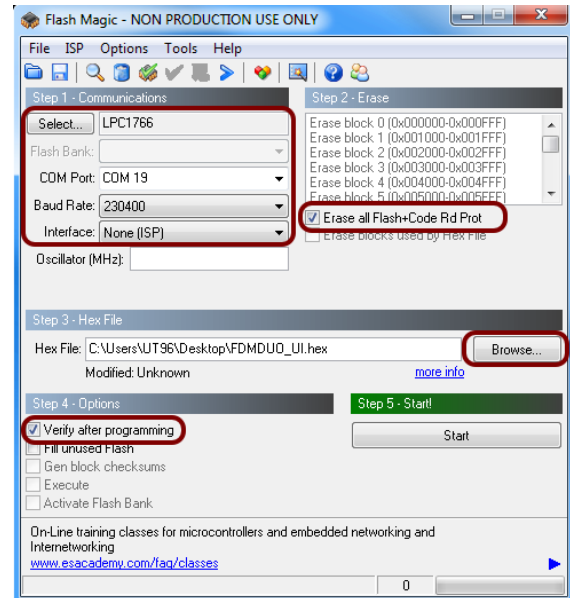
- check “Erase all Flash+Code Rd Prot”.

In the “Step 3 – Hex File” section :

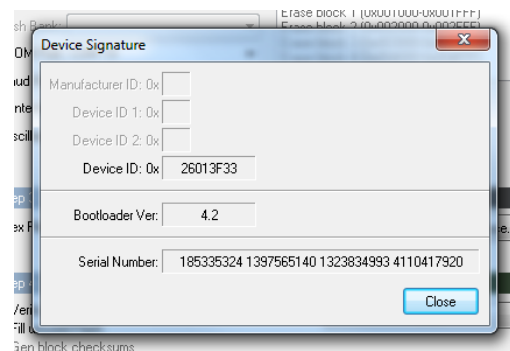
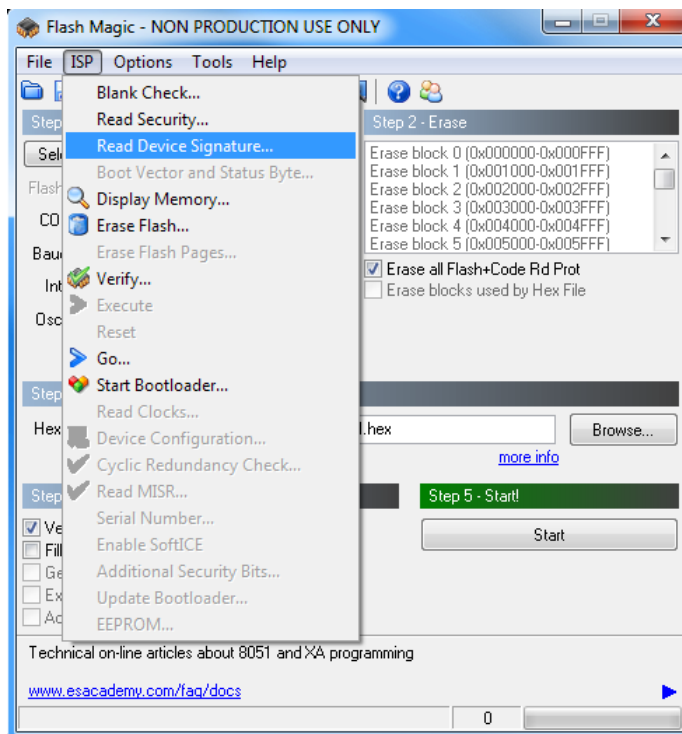
- click on Browse and select the update “.hex” file.

In the “Step 4 – Options” section :

- check “Verify after programming”

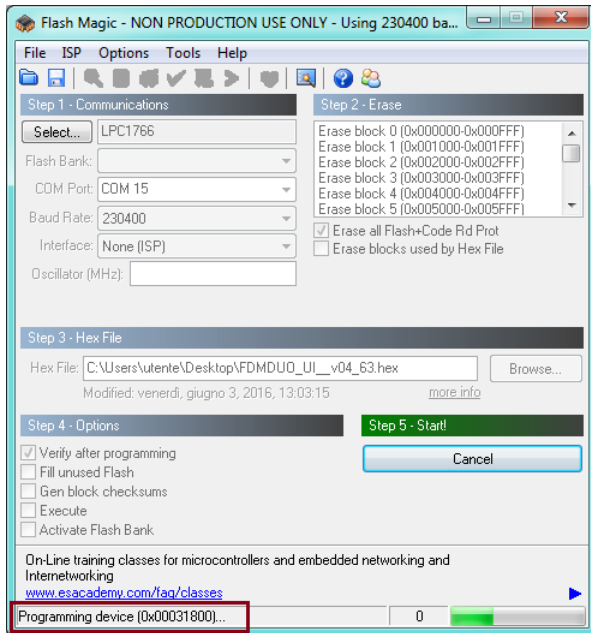


Check the communication with the FDM-DUO clicking on “ISP” and then on “Read Device Signature”. If the communication with the FDM-DUO is working, a new window with some device information is opened.

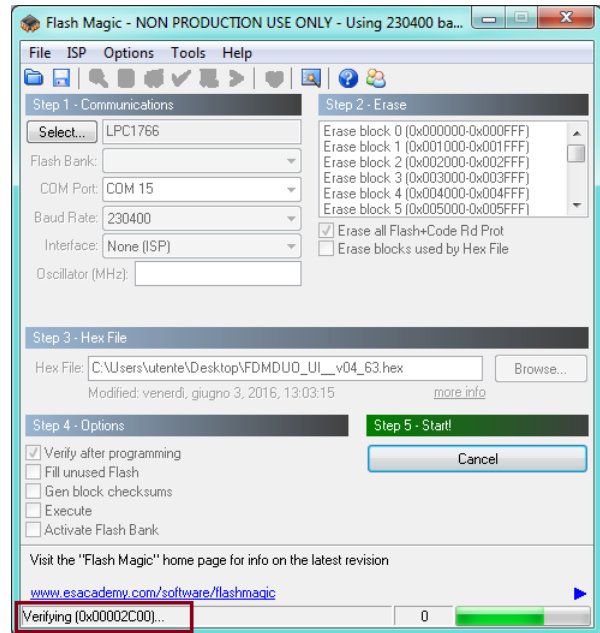


If the communication is working it is possible to proceed with the firmware update. Click on “close” on the “Device Signature” window. In the Flash Magic main window, click on “Start” to begin the programming.

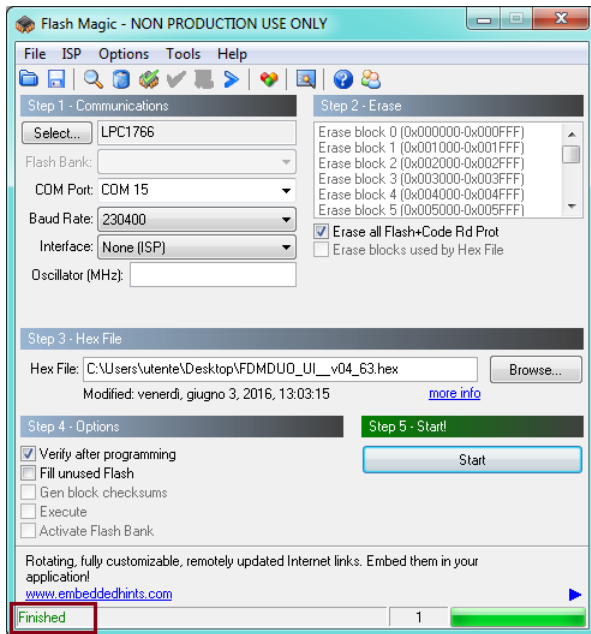
Flash Magic will now proceed to program the firmware.



Then, Flash Magic performs the programming verification.



Wait until the end of the process, it should result like the picture bellow.



Then turn off and on the FDM-DUO.

If some problems occur during the firmware update procedure, please contact the ELAD technical assistance.

4.4 Update with Flash Magic Version 12

Run Flash Magic 12 and set the following parameters.

In the “Device” section :

- select LPC1766 (LPC1700),
- COM Port: the CAT USB COM port,
- Baud Rate: 115200.

In the “Erase” section :

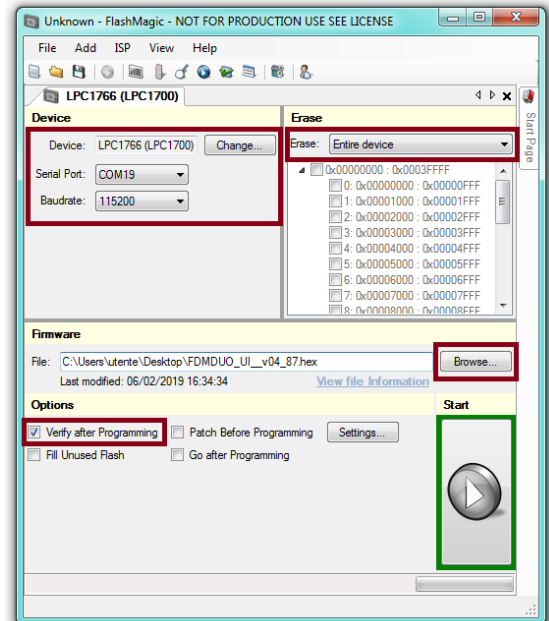
- choose “Entire device”.

In the “Firmware” section :

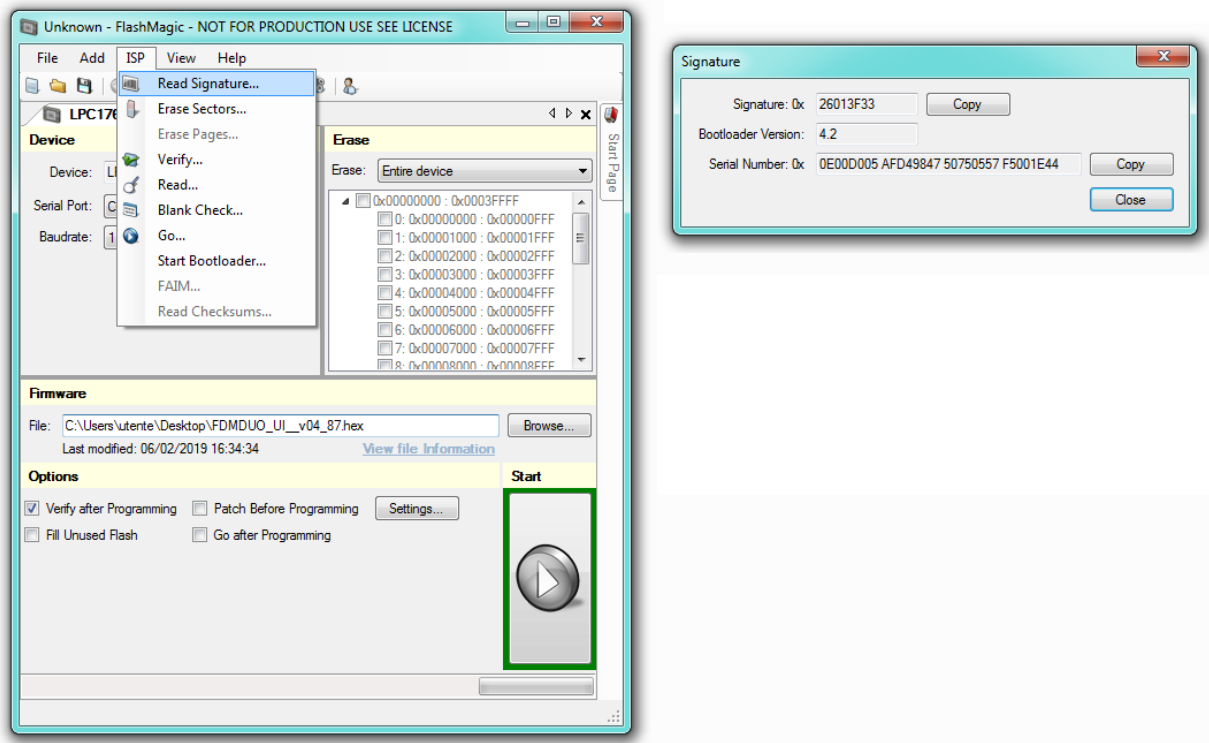
- click on Browse and select the downloaded “.hex” file.

In the “Options” section :

- check “Verify after programming”.

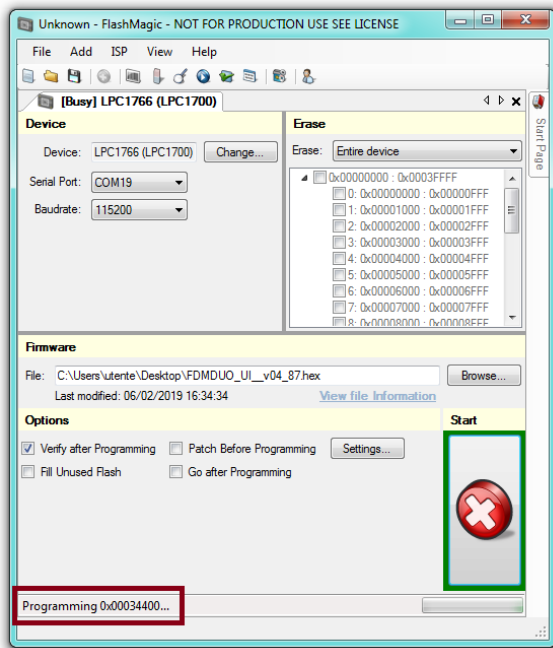


Check the communication with the FDM-DUO clicking on “ISP” and then on “Read Signature”. If the communication with the FDM-DUO is working, a new window with some device information is opened.

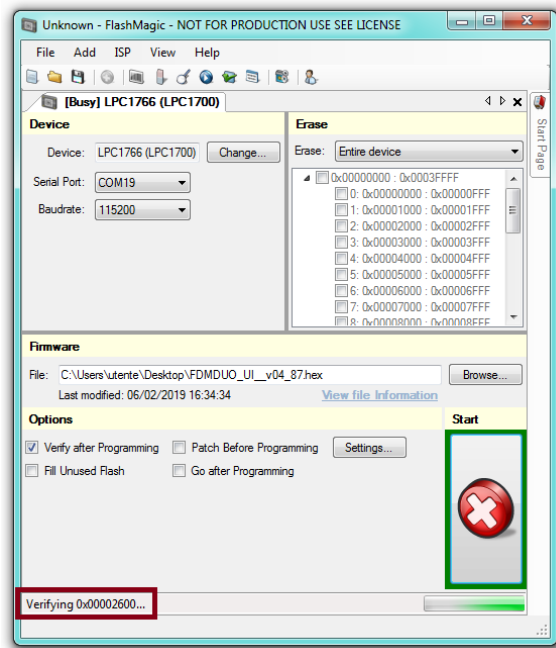


If the communication is working it is possible to proceed with the firmware update. Click on “close” on the “Signature” window. In the Flash Magic main window, click on “Start” to begin the programming.

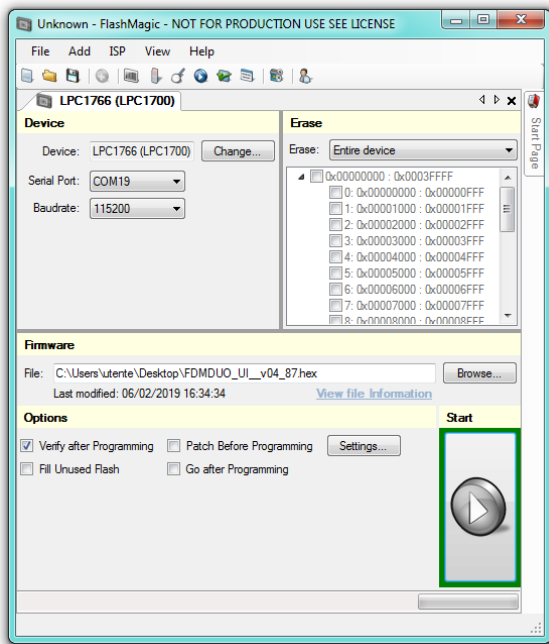
Flash Magic will now proceed to program the firmware.



Then, Flash Magic performs the programming verification.



Wait until the end of the process, it should result like the picture bellow.



Then turn off and on the FDM-DUO.

If some problems occur during the firmware update procedure, please contact the ELAD technical assistance.